

最好的廢鋁料回收

THE BEST OF ALUMINIUM RECYCLING



鋁料回收工廠和機器

Aluminium recycling plants and machinery



鋁料回收工廠和機器

ALUMINIUM RECYCLING PLANTS AND MACHINES

為了完成最終產品所需要的形式，可以使用不同標準的輪胎回收工廠，這些標準工廠起始點在於此種工廠，能適合特別規格客戶需求而訂製。

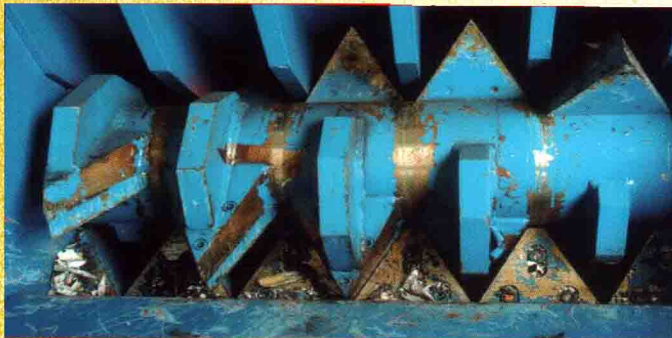
To achieve the required type of end-product, different standard tyre recycling plants are available. these standard plants are also the starting point when plants are tailored to suit specific customer requirements.

使用模組型完成，有很多組合能被提供來生產碎片、碎渣、粒狀物和粉狀。
Using a modular approach, a large number of combinations can be supplied to produce shreds, chips, granulate and power.

技術保證

PROVEN TECHNOLOGY

本設備設計符合市場需求這些個別機能很容易被調整到其他部份之尺寸，只要改變機器上篩網尺寸即可
The equipment is designed to meet market requirements, thus the individual machines can easily be adjusted to other fraction sizes, merely by changing the screen size in the machines.



碎片
Shreds



芯片
Chips



顆粒
Granulate



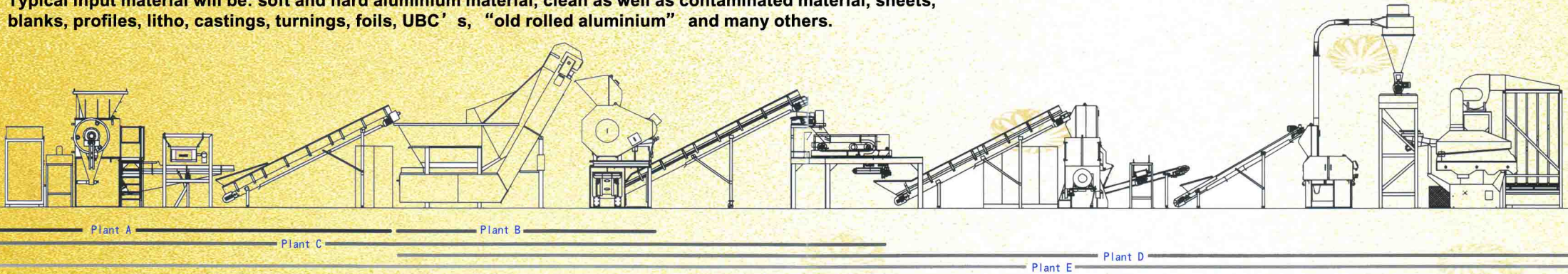
顆粒-各種尺寸
Granulate - various sizes



進料 Input

典型進料材質是：軟和硬鋁料，乾淨和混合料，鋁板，空鋁料，成型，鋁版，鑄鋁，車床料，鋁箔，USC，舊滾鋁和很多其他料。

Typical input material will be: soft and hard aluminium material, clean as well as contaminated material, sheets, blanks, profiles, litho, castings, turnings, foils, UBC's, "old rolled aluminium" and many others.



1. 超級切碎機 Super Chopper

一種有力、低速、單一軸心預先切碎，包括自動逆轉作為過載保護。碎片尺寸約100-300 mm。
A powerful, low-speed, single or dual shaft pre-chopper including automatic reverse for overload protection. Fraction size approx. 100-300 mm shreds.

2. 跌回進料器 Tumble Back Feeder

本機確定一種連續流程進入，多目的銼子，如此可確定一種適當荷重/及多目的銼子的使用。
The machine ensures a continuous flow into the Multi Purpose Rasper thus ensuring an optimum load/utilization of the Multi Purpose Rasper.

3. 多目的地銼子機 Multi Purpose Rasper

此支機器是一種有效益，中等速度，雙驅動銼子器，專門設計作為鋁回收用，它可確定個別尺寸減少到約20MM碎屑。

The machine is an effective, medium-speed, dual drive Rasper designed for aluminium recycling. It ensures individual size reduction down to approx. 20 mm.

4. 渦電流分選機 Eddy Current Separator

渦電流分選機確定從鋁料中有機料的分選。

This Eddy Current Separator ensures the separation of organic material from the aluminium.

5. 重顆粒器 Heavy Granulator

高速，單一軸細重顆粒器適合第1型等級(盛下的鐵材料能被釋放) 典型尺寸約8-13MM顆粒
High-speed, single shaft Heavy Granulator for the first granulation stage (remaining Fe-material is liberated). Fraction sizes typically between 8-13 mm granulate.

6. 細顆粒器 Fine-Granulator

高速，單一軸細顆粒器適合第2和最後顆粒等級，典型尺寸約4-8 MM顆粒
A high-speed, single shaft Heavy Granulator for the second and final granulation stage. Fraction sizes typically between 4-8 mm granulate.

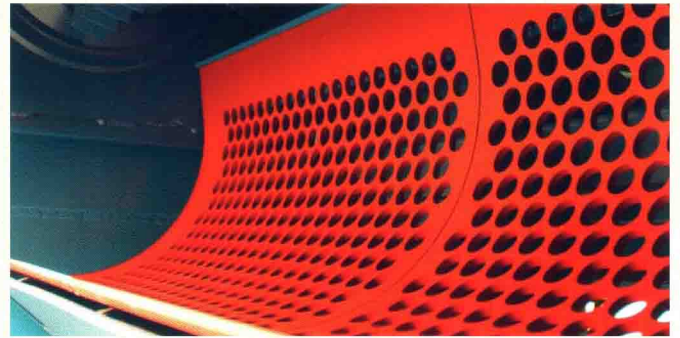
7. 分選桌 Separation Table

確定最後尺寸分配並且有幾示可達100%純度乾淨金屬料
This machine ensures final size distribution and an almost 100% clean metal fraction.



特性 Features

- 高性能 High performance
- 低製作成本
Low processing costs
- 低電力請耗
Low power consumption
- 低維修成本
Low maintenance costs
- 模組觀念工廠能使您適應生產產品規定客戶需求
The modular concept behind the plants enables you to adapt your production output fraction to specific customer demands.
- 相近似的產品可減少熔煉過程能源成本
Homogeneous output which reduces your energy costs in the melting process.
- 工廠可依客戶需求而訂製設備
Our plants are tailored to suit your requirements and facilities.



售後服務可確信減少當機時間
After sales service ensure reduced downtime

售後服務部門是您可信賴伙伴！
The After Sales Division is your reliable partner!

- 售後服務部門提供了AD. HOC服務，對於現有和新設備，經過訓練有素和經驗豐富的工程師和監督者
The After Sales Division offer ad hoc service on existing as well as new equipment through our trained and experienced service engineers and supervisors.
- 通常保持廣泛的存儲備品和消耗器
We constantly hold an extensive stock of spare and wear parts.
- 機動性服務合約確定有計劃性，可防止生產線上維修
The flexible service contracts ensure planned, preventive maintenance of your production line.
- 個案合約，可確保零件不缺作為緊急使用
Tailored contracts ensure that parts are available for immediate call off.
- 只要連絡我們備品和消耗品人員之一，我們會提供可能的解決方案
Contact one of our spare and wear part coordinators, and we will supply the best possible solution for your company.



選用模組作為特定客戶之需求用

Optional modules for specific customer requirements

· 粉碎機 Shredder

一種有力、低速、環狀粉碎機，作為鋁料尺寸的減小。

A powerful, high-speed Ring Shredder for size reduction of aluminium.

· ACSR剪切機 M16-2 ACSR Shear M16-2

作為切斷ACSR線料。

For cutting of ACSR cables.

· 簡單入料 Simple to load

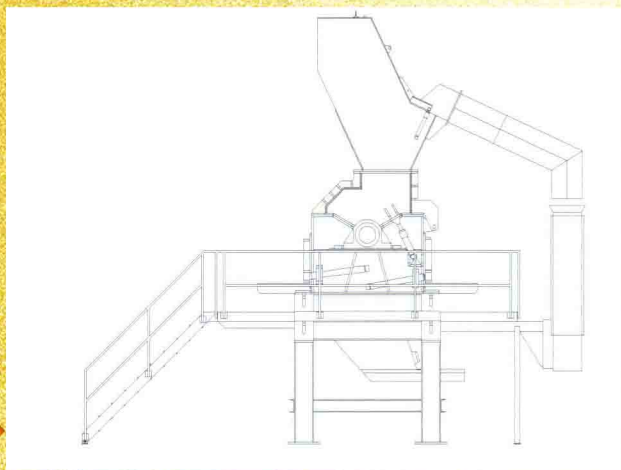
· 簡單操作 Simple to operate

· 簡單維修 Simple to maintain

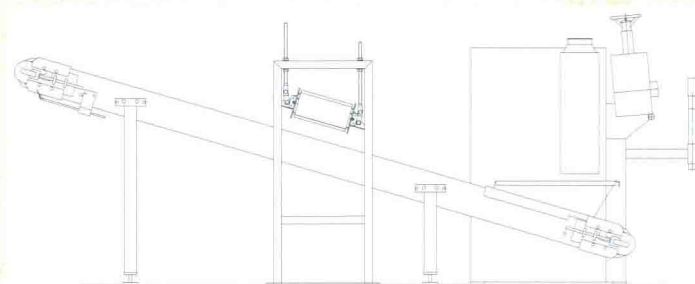
· 入料速度：可達60 m/分 Feeding speed: up to 60 meters/minute

· 粉碎速度：可達400刀/分 Chopping speed: up to 400 cuts/minute

· 線料直徑：可達50mm Cable diameter: up to 50 mm



· 粉碎機 Shredder



· ACSR剪切機 M16-2 ACSR Shear M16-2



揮王企業股份有限公司
HWE WANG ENTERPRISES INC.

TEL:07-8317878 FAX:07-8311789, 07-8224967

E-mail:hwewang@ms3.hinet.net http://www.hwe-wang.com.tw