

## 磁性管

# MAGNETIC TUBES

永久管狀磁鐵 PERMANENT TUBE MAGNETS

*Rare Earth Magnets now  
in Xtreme strengths*



### 特性和優點

#### FEATURES & BENEFITS

- One-inch (25.4 mm) diameter tubes
- 316/316L stainless-steel construction
- Custom made to any length
- Rare-earth circuits for up to 150°F, 250°F or 400°F
- Alnico circuits are available for temperatures up to 800°F
- New and improved ceramic circuits have twice the holding force of our traditional magnets

powerful permanent magnetic tube magnets are designed to remove ferrous contamination from dry and liquid products. They can be used as inspection tools or in areas where conventional Grate Magnets will not fit.

Tube Magnets are made from either Erium™ 25 or Erium™ 3000 Rare Earth material. We recommend Erium 25 tube magnets for removal of tramp metal and

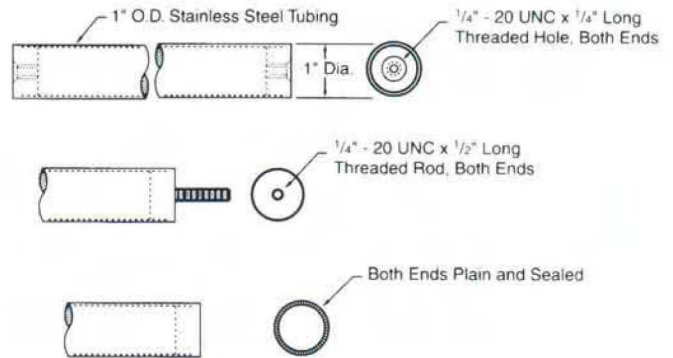
Erium 3000 Rare Earth tube magnets for capturing fine ferrous or weakly magnetic material.

Rare Earth Magnet circuit utilizes the strongest magnet material available to recover more fine-iron contamination and reduce product washoff. Contact Magnetics to discuss your application(s). We will select the design that best fits your application.

## SPECIFICATIONS 規格

Tube magnets can be manufactured with the following ends:

- Stainless-steel end plugs with 1/4"-20 drilled and tapped ends
- Stainless-steel 1/4"-20 threaded studs, 1/2" long
- Stainless-steel plain end plugs
- Stainless-steel plain end plugs with heliarc welds
- Stainless-steel sanitary end plugs
- Other ends available upon request



*Dimensions and specifications are subject to change without notice.*

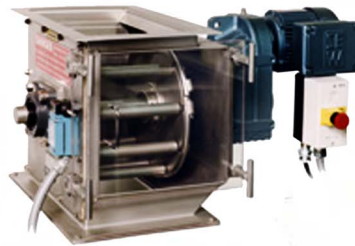
### OTHER EQUIPMENT

### 其他設備

**B型捕捉器**



B-Trap



Rota-Grate® 旋轉格柵



P Grate **P型格柵**

**P型格柵**



P Grate



Easy-To-Clean TGH-2 Grate-In-Housing

外殼內容易清除TGH格柵



Easy-To-Clean Retractable Grate

容易清除可伸縮磁格柵