

鐵金屬處理設備

FERROUS  
EQUIPMENT





## 粉碎機

Our engineers work seamlessly with fabricators at our manufacturing facility using today's communication technology to offer shredder operators a set of resources that is

→ **unmatched**  
by other suppliers of shredding equipment.



The shredder division in San Antonio, Texas, draws upon that city's rich talent and tradition in the metals shredding sector.

metal shredders include the HS6090, HS80115, HS98115, and HS125125 models which are 60-, 80-, 98-, and 125-inch hammer swing shredders, respectively.

Features include patented, reversible hood, back wall castings, and fully interlocked fabrication. Available in 2000-8000 horsepower, shredders have full system capabilities. shredders process auto scrap, white goods, secondary metals, aluminum, and selected structural steel shapes.

also offers total infeed and downstream equipment for turnkey shredder installations.



Equipment built with

**Tradition**

and designed with

**Performance and Power**

in mind.

傳統的製造設備，  
而使用良好的性能和動力來設計



# BSH斷頭台式油壓剪 BSH Guillotine Shears

## Featuring the patented "Tuck-&-Fold"

compression box, which densifies the material before shearing, the BSH shears are available in capacities of up to 2,200 tons. The "Tuck-&-Fold" compression box reduces pre-processing time with no or minimal torch cutting operations, allowing fast feeding and great production. BSH Shears are available with throat widths of 3' to 5' (.9m to 1.5m).

Other exclusive features include external gib and knife adjustments, cylinders, a wide-open charge hopper for fast loading of irregular scrap, an easy-to-service power pack, and Teflon-protected pistons for minimum friction and more hours of trouble-free operation. BSH Shears process auto scrap, steel mill scrap, selected freight car and ship sections, shapes, pipe, plate, no. 2 heavy melting scrap, and selected no. 1 heavy melting scrap.



## GS型捆裝/木材/油壓剪

## GS Baler/Logger/Shears ← - - - -



The Global Shear line of baler/logger/shears is one of our product lines designed to fulfill the requirements of the electric arc furnaces. The GS Shear comes in 700, 900, and 1100 ton shearing capacities. They include a clamshell type box with higher side compression force designed for better trapping. To bale or log, the GS has up to 226 tons of baling force.

GS型裝有新型先進的油壓系統，快速而且減少循環時間，可增加產能



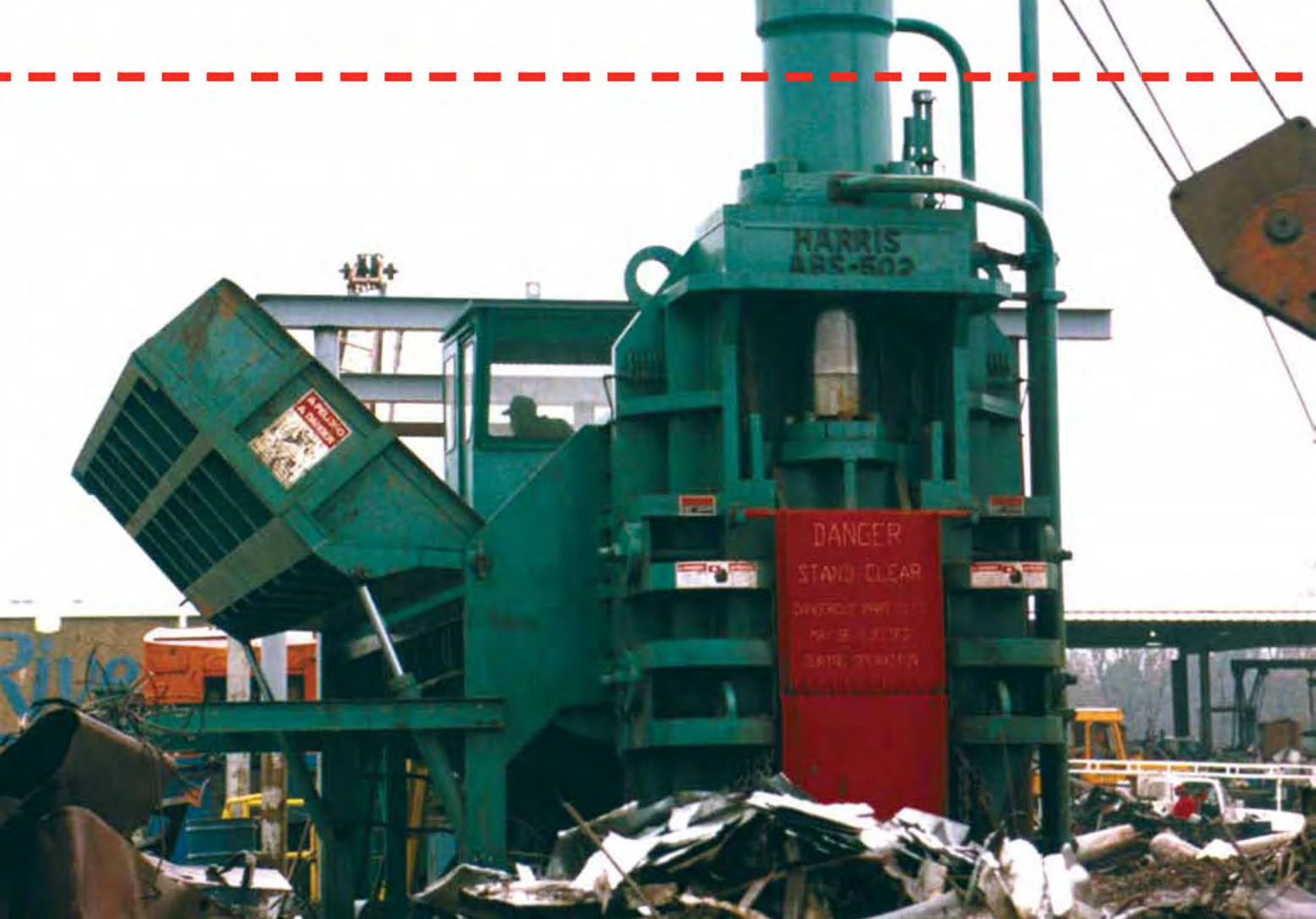
The **GS** is equipped with the **new advanced** hydraulic system utilizing flooded suction pumps, and is **fast** with decreased cycle times and **increased productivity.**

最好操作是安全的一種

**The best operation is a safe one.**

While products are known for their power and stability, the most important feature in all applications is safety. considers itself ahead of the pack when it comes to safety .





HARRIS  
ABS-502

DANGER  
STAND CLEAR  
DANGER OF PARTS  
BEING LIFTED  
DURING OPERATION

A WARNING & DANGER

Rip



## — — → ABS油壓剪 ABS Shears

Developed with an emphasis on economy, the line of ABS

Shears has proven to be **fast**

**快速和經濟的** and **economical**,

meeting the needs of scrap processors around the world. Offered in 550, 800, and 1000 ton models, the

ABS employs a unique concept in design; a **pre-compression charging box** in which one

half of the box opens to accept scrap, and the other half remains rigid with the “Tuck-and-Fold” flipper. All

this, plus the dependable, heavy-duty construction found in more expensive shears, makes the ABS Shears a wise choice for any yard.



Other exclusive features include external gib and knife adjustments, cylinders, an **easy-to-service** power pack, and Teflon-protected pistons for minimum friction and more hours of trouble-free operation. ABS Shears process steel mill scrap, shapes, pipes and plate, no. 2 heavy melting scrap, and selected no. 1 heavy melting scrap.

# TGS成網機 TGS Balers ←

## 高產能和多用途

The TGS line of balers offer **high production** and **versatility** which makes them a profitable performer in virtually any scrap yard. They use a three-compression baling system and have the **widest range** of bale sizes from 5"x5"xV to 24"x24"xV.

TGS Balers process soft alloys of stainless sheet, factory clips and skeletons, shapes, wire, tubing, non-ferrous metals (copper wire, low alloy aluminum sheet, etc).



## TG Balers TG型成網機

The TG line of balers produce

**high density**

uniform bales that meet all industry standards. They precompress material into the charging box with a massive lid and utilize a three-compression baling system to produce a bale. The TG line is perfect for companies that need a **heavy-duty, reliable** baling system.

TG balers are the most preferred balers in the industry.

TG Balers process slitter coils, industrial clips, skeletons, steel mill sheet, automobiles, railroad boxcar sides and roofs, selected structural steel, wire, and reinforcing rods.





## SS型邊擠型油壓剪 Side-Squeeze (SS) Shears

SS Shears process:

steel mill scrap, pipe, plate, selected freight car and ship sections, no. 2 heavy melting scrap, and no. 1 heavy melting scrap.



The SS Shear with lid is designed to confine and compress scrap utilizing a fully **guided side compression system.**

It provides maximum productivity through continuous, efficient production while requiring only limited maintenance due to simplicity of operation. The SS Shears are available with throat widths of 3' to 5' (.9m to 1.5m) and shearing forces ranging from 700 to 2200 tons. Other exclusive features include external gib and knife adjustments and cylinders.





H562成網機/木材/油壓剪

H562 Baler/Logger/Shears

高效率 **High Efficiency**

machines in a small package. The H562 is

固定式或  
可移動型 available in a **Stationary** or **Transportable** unit depending

on your needs. The H562 has a 3' throat and over 500 tons of shearing force. They can process a wide variety of scrap.

The H562 also bales and logs autos, white goods, and factory clips.





## 銷售和服務

## SALES AND SERVICE

Our promise 我們的承諾

At \_\_\_\_\_ we believe in the on-going *support* of our machines. Our domestic and international partners are there to make sure that your experience with a \_\_\_\_\_ product is superb.

**World Class Parts:** \_\_\_\_\_ has a world class parts department to help with all your machine needs from wear parts, such as liners, to hydraulic cylinders. Harris can solve any problem you have.

Our website contains detailed information about all \_\_\_\_\_ products. You can skim through pages of products, download product brochures, read news on all the happenings with \_\_\_\_\_ and find your local sales associate.

### 典型的客戶使用

## TYPICAL CUSTOMER APPLICATIONS ← - - - - -

### Shears:

Auto Manufacturers, Auto Dismantlers, Scrap Processors, Steel Mills, Can Plants, Foundries and Smelters

### Ferrous Balers:

Auto Manufacturers, Auto Dismantlers, Scrap Processors, Steel Mills, Can Plants, Foundries and Smelters

### Shredders:

Auto Manufacturers, Auto Dismantlers, Scrap Processors and Steel Mills

\_\_\_\_\_ equipment is **fully assembled** at our manufacturing plant to test fitting and eliminate problems during installation.



is a **WORLDWIDE LEADER** in  
the **design, manufacture, and support** of scrap  
processing, recycling, and waste handling equipment.

在設計，製造和支持成為廢鋼製程，資源回收  
和廢料處理設備居於世界領導地位