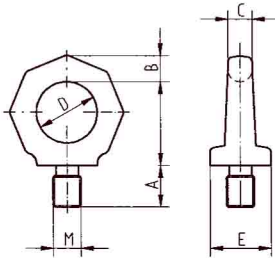


吊眼螺栓與螺帽 Eyebolts and eyenuts

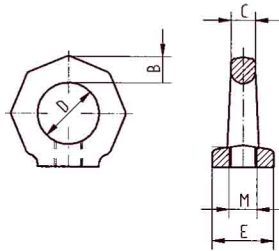


吊眼螺栓 RS RUD Eyebolts RS RUD



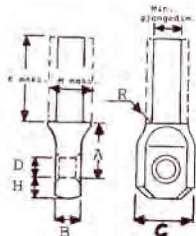
Varenr Item no.	Type Code	WLL 4:1 tonn	Mål i mm/dim mm						Kg
			A	B	C	D	M	E	
0205010	RS-M 6	0,1	35	10	12	25	6	25	0,10
1	RS-M 8	0,2	35	10	12	25	8	25	0,10
2	RS-M 10	0,3	35	10	15	25	10	25	0,10
3	RS-M 12	0,4	41	12	18	30	12	30	0,20
4	RS-M 14	0,8	48	14	21	35	14	35	0,25
5	RS-M 16	1,0	48	16	24	35	16	35	0,30
6	RS-M 20	1,5	55	20	30	40	20	40	0,45
7	RS-M 24	2,0	70	20	36	50	24	50	0,70
8	RS-M 30	3,0	85	24	45	60	30	60	1,60
9	RS-M 36	4,0	130	43	54	90	36	100	6,00
20	RS-M 42	6,0	130	43	63	90	42	100	6,20
21	RS-M 48	8,0	130	43	68	90	48	100	6,40

吊眼螺帽 RM RUD Eye nuts RM RUD



Varenr Item no.	Type Code	WLL 4:1 tonn	Mål i mm/dim mm					kg N.W.
			B	C	D	M	E	
0205022	RS-M 6	0,1	10	12	25	6	25	0,10
3	RS-M 8	0,2	10	12	25	8	25	0,10
4	RS-M 10	0,3	10	15	25	10	25	0,10
5	RS-M 12	0,4	12	18	30	12	30	0,20
6	RS-M 14	0,8	14	21	35	14	35	0,25
7	RS-M 16	0,8	16	24	35	16	35	0,30
8	RS-M 20	1,5	20	30	40	20	40	0,45
9	RS-M 24	2,0	20	36	50	24	50	0,70
30	RS-M 30	3,0	24	45	60	30	60	1,60
1	RS-M 36	4,0	43	54	90	36	100	6,00
2	RS-M 42	6,0	43	63	90	42	100	6,20
3	RS-M 48	8,0	43	68	90	48	100	6,40

吊眼螺栓 Eyebolts code B



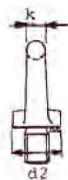
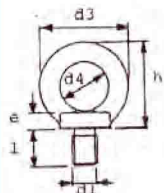
Varenr Item no.	Dim. Code	WLL 4:1 tonn	Min. A mm	Mål i mm/dim mm							Min. gjengedim. Min. thread diam.	kg N.W.
				B	C	D	H	K. max	M. max	R. Max		
0311041	B 25	3,2	28	16	38	14	14	115	25	2	M 16	0,7
2	B 30	5,4	30	19	42	15	16	122	30	2	M 20	1,0
3	B 35	8,0	35	21	51	18	18	130	35	3	M 24	1,0
4	B 40	12,5	42	26	60	23	21	155	40	3	M 30	2,4
5	B 46	15,5	46	30	64	25	25	195	46	4	M 36	6,0
6	B 55	24,8	58	37	78	31	31	220	55	4	M 42	7,0

吊眼螺栓與螺帽

Eyebolts and eyenuts



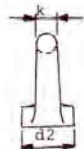
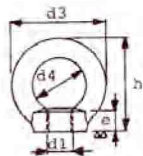
德規吊眼螺栓 Eyebolts DIN. 580



45° arbeidsvinkel og
sikkerhetsfaktor 4:1
2 bolts working at 45°
and factor of safety 4:1

Varenr Item no.	Type Gjengedim. Treads	WLL T	WLL T*	Mål i mm/dim mm								kg N.W.
				d1	d2	d3	d4	e	h	k	l	
0311001	M 8	0,140	0,095	M 8	20	36	20	6	36	8	13	0,06
2	M 10	0,230	0,170	M 10	25	45	25	8	45	10	17	0,11
3	M 12	0,340	0,240	M 12	30	54	30	10	53	12	20,5	0,18
4	M 16	0,700	0,500	M 16	35	63	35	12	62	14	27	0,28
5	M 20	1,200	0,830	M 20	40	72	40	14	71	16	30	0,45
6	M 24	1,800	1,270	M 24	50	90	50	18	90	20	36	0,74
7	M 30	3,600	2,600	M 30	65	108	60	22	109	24	45	1,66
8	M 36	5,100	3,700	M 36	75	126	70	26	128	28	54	2,65
9	M 42	7,000	5,000	M 42	85	144	80	30	147	32	63	4,03
10	M 48	8,600	6,100	M 48	100	166	90	35	168	38	68	6,38

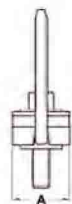
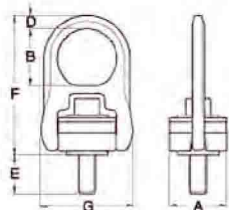
德規吊眼螺帽 Eyenuits DIN. 582



45° arbeidsvinkel og
sikkerhetsfaktor 4:1
2 bolts working at 45°
and factor of safety 4:1

Varenr Item no.	Type Gjengedim. Treads	WLL T	WLL T*	Mål i mm/dim mm								kg N.W.
				d1	d2	d3	d4	e	h	k		
0311021	M 8	0,140	0,095	M 8	20	36	20	8,5	36	8	0,05	
2	M 10	0,230	0,170	M 10	25	45	25	10	45	10	0,09	
3	M 12	0,340	0,240	M 12	30	54	30	11	53	12	0,16	
4	M 16	0,700	0,500	M 16	35	63	35	13	62	14	0,24	
5	M 20	1,200	0,830	M 20	40	72	40	16	71	16	0,36	
6	M 24	1,800	1,270	M 24	50	90	50	20	90	20	0,72	
7	M 30	3,600	2,600	M 30	65	108	60	25	109	24	1,32	
8	M 36	5,100	3,700	M 36	75	126	70	30	128	28	2,08	
9	M 42	7,000	5,000	M 42	85	144	80	35	147	32	3,11	
30	M 48	8,600	6,100	M 48	100	166	90	40	168	38	5,02	

普通吊眼螺栓 Universal eyebolts



Full belastningsevne
i alle kraftretninger.
360° dreievinkel, 180°
leddvinkel
Full capacity at all angles

Varenr Item no.	WLL Tonn		Torque in Nm	Bolt str. Bolt size	Mål i mm/dim mm						kg N.W.
	5:1	4:1			E	A	B	D	F	G	
0311071	0,45	0,55	16	M10x1,50x60	26,5	40	41	9	102	65	0,44
2	1,05	1,30	38	M12x1,75x60	14,0	65	59	15	159	105	2,10
3	1,05	1,30	38	M12x1,75x75	29,0	65	59	15	159	105	2,10
4	1,90	2,40	81	M16x2,00x65	19,0	65	59	15	159	105	2,10
5	1,90	2,40	81	M16x2,00x80	34,0	65	59	15	159	105	2,10
6	2,15	2,70	136	M20x2,50x70	24,0	65	59	15	159	105	2,10
7	2,15	2,70	136	M20x2,50x90	44,0	65	59	15	159	105	2,10
8	3,00	3,75	136	M20x2,50x80	25,0	85	73	15	204	134	4,20
9	3,00	3,75	136	M20x2,50x100	45,0	85	73	19	204	134	4,20
10	4,20	5,25	312	M24x3,00x80	25,0	85	73	19	204	134	4,20
11	4,20	5,25	312	M24x3,00x105	50,0	85	73	19	204	134	4,20
12	7,00	8,75	637	M30x3,00x105	77,0	100	80	19	218	160	6,77