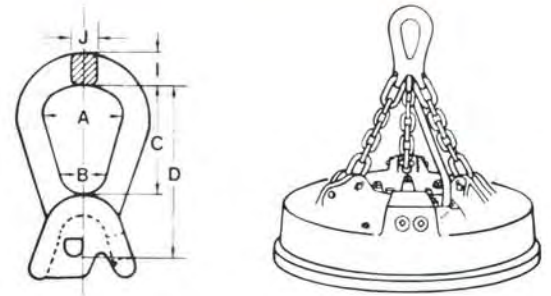


1 CM bail-type magnet CM桶杓型磁鐵吊鍊組 chain assemblies

An alloy casting supplied with welded links and chain.

Magnet not included with assembly.

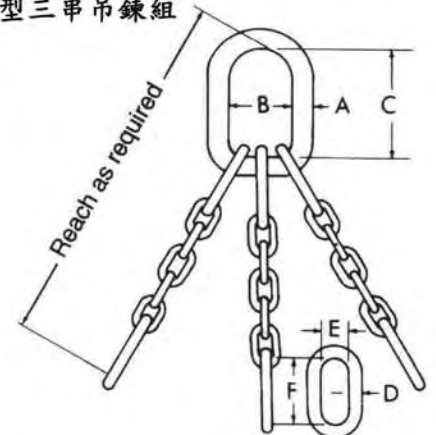


| Chain size (in.) | Product code | UPC 43927- | Magnet diameter (in.) | Assembly working load limit (lbs.)* | Bail (inches) | | | | | | End link (inches) | | | Standard reach (in.)** | Length of 2 body chain links (in.)** | Assembly weight (lbs.) |
|------------------|--------------|------------|-----------------------|-------------------------------------|---------------|-------|----|--------|-------|-------|-------------------|----------------|-----------------|------------------------|--------------------------------------|------------------------|
| | | | | | A | B | C | D | I | J | Dia. A | Inside width B | Inside length C | | | |
| 3/4 | 607442 | 20932 | 39 to 44 | 59,500 | 4 1/4 | 3 | 7 | 11 1/4 | 2 | 2 | 7/8 | 2 | 5 | 31 1/4 | 4 | 69.4 |
| 7/8 | 607443 | 22535 | 44 & 45 | 74,500 | 4 1/4 | 3 | 7 | 11 1/4 | 2 | 2 | 1 | 2 1/4 | 5 3/4 | 34 | 4 1/2 | 83.8 |
| 1 | 607444 | 20933 | 45 to 60 | 101,000 | 5 3/16 | 3 1/2 | 8 | 12 3/4 | 2 3/8 | 2 1/4 | 1 1/8 | 2 1/4 | 5 3/4 | 37 9/16 | 5 9/16 | 125.9 |
| 1 1/4 | 607445 | 22785 | over 60 | 149,000 | 7 1/2 | 6 | 11 | 17 | 2 1/2 | 2 1/2 | 1 1/2 | 3 1/8 | 8 | 49 1/4 | 6 1/2 | 265.5 |

**If additional reach is required, add 2 link increments to standard total reach.

CM standard triple branch magnet chains CM標準型三串吊鍊組

Assembled with 5 links of body chain in each branch.



| Chain size (in.) | Working load limit (lbs.)* | Product code | UPC 43927- | Magnet diameter (in.) | Master link (inches) | | | End link (inches) | | | Standard reach (in.)** | Approx. weight (lbs.) | Length of 2 body chain links (in.) |
|------------------|----------------------------|--------------|------------|-----------------------|----------------------|----------------|-----------------|-------------------|----------------|-----------------|------------------------|-----------------------|------------------------------------|
| | | | | | Diameter A | Inside width B | Inside length C | Diameter D | Inside width E | Inside length F | | | |
| 5/8 | 47,000 | 604701 | 20927 | up to 39 | 1 3/4 | 5 | 8 | 3/4 | 2 | 5 | 26 3/4 | 40 | 3 1/2 |
| 3/4 | 73,500 | 604702 | 20928 | 39 to 44 | 1 3/4 | 5 | 8 | 7/8 | 2 | 5 | 28 | 49 | 4 |
| 7/8 | 88,900 | 604703 | 20929 | 44 & 45 | 2 | 5 | 9 | 1 | 2 1/4 | 5 3/4 | 31 3/4 | 72 | 4 1/2 |
| 1 | 123,900 | 604704 | 20930 | 45 to 60 | 2 | 5 | 9 | 1 1/8 | 2 1/4 | 5 3/4 | 33 13/16 | 91 1/2 | 5 3/8 |
| 1 1/4 | 187,800 | 604705 | 20931 | over 60 | 2 1/2 | 6 1/2 | 12 | 1 1/2 | 3 1/8 | 8 | 44 1/4 | 193 1/2 | 6 1/2 |

**If additional reach is required, add 2 link increments to standard total reach.

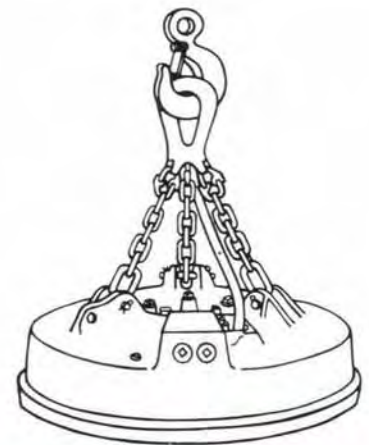
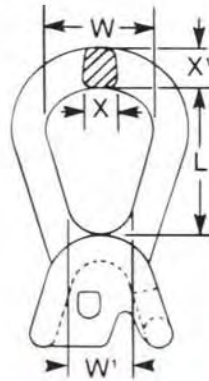
*** ⚠ WARNING**

- Do not exceed working load limit.
- Use only alloy chain and attachments for overhead lifting.

Magnet Chains (bell type) 磁鐵吊鍊(鐘型)

Magnet Bell is an alloy casting devoid of moving parts, designed for operational ease and longer life. This assembly is supplied with Quik-Alloy® No-Take-Apart coupling links.

The Bell-Type Magnet Chain assembly has the following built-in features: All legs operate without twist and are spaced equally, Chain will not work-harden and never requires annealing. Entire assembly is heat treated and proof tested alloy steel. Bell will stand upright when at rest.



| Chain Size Inches | MM | Magnet Diameter, Inches | Bell Dimensions, Inches | | | | | End Link, Inches | | | Std. Total Reach†, Inches | Length of Two Links, Inches | Approx. Weight of Assembly | | Approx. Weight Bell Only | | Assembly Working Load Limit* | |
|----------------------|----|----------------------------|-------------------------|-------|--------|----|-------|------------------|--------------|---------------|---------------------------|-----------------------------|----------------------------|------|--------------------------|------|------------------------------|--------|
| | | | X' | X | W | L | W' | Dia. | Inside Width | Inside Length | | | Pounds | Kgs. | Pounds | Kgs. | Pounds | Kgs. |
| 3/4 | 20 | 39"-44" | 2 | 2 | 4 1/4 | 7 | 3 | 7/8 | 2 | 6 | 33 1/2 | 4 3/8 | 75 | 34 | 37 | 17 | 59,700 | 27,100 |
| 7/8 | 22 | 44"-45" | 2 | 2 | 4 1/4 | 7 | 3 | 1 | 2 1/8 | 6 | 35 1/2 | 4 7/8 | 92 | 42 | 37 | 17 | 74,700 | 33,900 |
| 1 | 26 | 45"-60" | 2 3/4 | 2 1/4 | 5 3/16 | 8 | 3 1/2 | 1 1/8 | 2 1/4 | 6 | 39 1/2 | 5 5/8 | 137 | 62 | 60 | 27 | 100,600 | 45,700 |
| 1 1/4 | 32 | 60" & over | 2 1/2 | 2 1/2 | 7 1/2 | 11 | 6 | 1 1/2 | 2 5/8 | 7 | 49 1/2 | 7 | 281 | 127 | 124 | 56 | 149,400 | 67,800 |

Bell Type 鐘型

| | | | | | | | | | | | | | | | | | | |
|-------|----|------------|-------|-------|-------|--------|---|-------|-------|---|----|---|-----|-----|-----|----|---------|--------|
| 1 1/4 | 32 | 60" & over | 2 3/4 | 2 3/4 | 9 1/2 | 14 1/2 | 7 | 1 1/2 | 2 5/8 | 7 | 53 | 7 | 302 | 137 | 145 | 66 | 149,400 | 67,800 |
|-------|----|------------|-------|-------|-------|--------|---|-------|-------|---|----|---|-----|-----|-----|----|---------|--------|

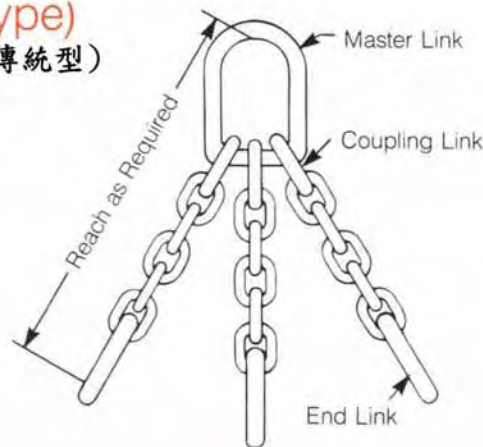
Large Bail (Special Bell) 大桶杓(特殊鐘形)

Magnet Chains (conventional type) 磁鐵吊鍊(傳統型)

Campbell's conventional type magnet chain assemblies are made entirely from alloy steel. The conventional assembly is heat treated and proof tested as a unit.

Conventional type assemblies do not have connecting dowels or cotter pins, never require annealing, and incorporate uniform hardness which provides abrasion resistance.

Special assemblies can be made to fit your specific requirements.



| Chain Size Inches | MM | Magnet Diameter, Inches | Master Link, Inches | | | End Link, Inches | | | Standard Total Reach†, Inches | Length of Two Links, Inches | Approx. Weight of Assembly | | Assembly Working Load Limit* | |
|----------------------|----|----------------------------|---------------------|--------------|---------------|------------------|--------------|---------------|-------------------------------|-----------------------------|----------------------------|------|------------------------------|--------|
| | | | Dia. | Inside Width | Inside Length | Dia. | Inside Width | Inside Length | | | Pounds | Kgs. | Pounds | Kgs. |
| 5/8 | 16 | Up to 39" | 1 3/4 | 6 | 10 | 3/4 | 2 | 5 1/2 | 28 1/4 | 3 3/4 | 45 | 20 | 43,000 | 19,500 |
| 3/4 | 20 | 39"-44" | 2 | 6 | 10 | 7/8 | 2 | 6 | 31 | 4 3/8 | 60 | 27 | 59,700 | 27,100 |
| 7/8 | 22 | 44"-45" | 2 1/8 | 6 | 10 | 1 | 2 1/8 | 6 | 32 1/2 | 4 7/8 | 75 | 34 | 74,700 | 33,900 |
| 1 | 26 | 45"-60" | 2 1/4 | 6 1/2 | 11 | 1 1/8 | 2 1/4 | 6 | 36 | 5 5/8 | 90 | 41 | 100,600 | 45,700 |
| 1 1/4 | 32 | 60" or over | 2 1/2 | 6 1/2 | 12 | 1 1/2 | 2 5/8 | 7 | 42 | 7 | 160 | 73 | 149,400 | 67,800 |

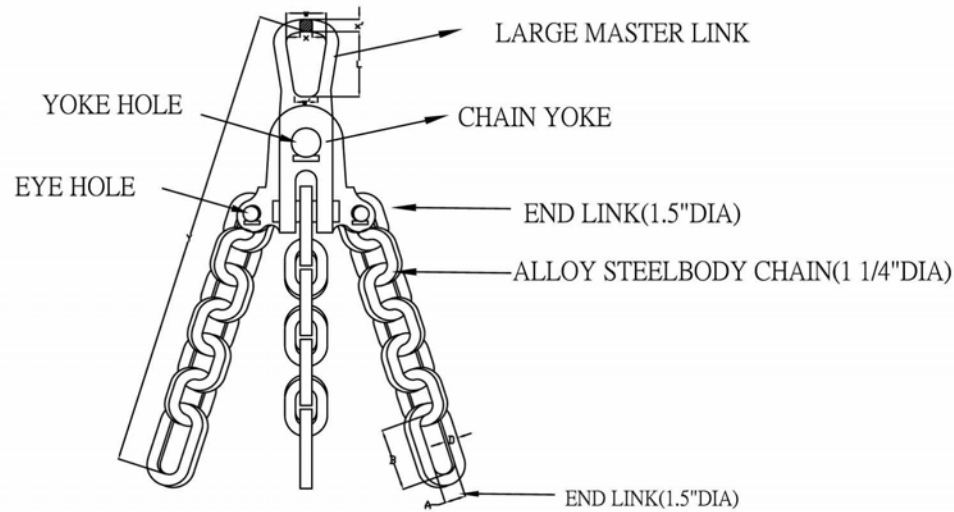
Conventional Type 傳統型

† Reach shown is standard unless otherwise specified. If additional reach is required, add 2 link increments to each leg. Dimensions and weights are approximate.

*Warning: Do not exceed Working Load Limit.

磁鐵吊鍊組合圖(100" 磁鐵用)

100" MAGNET CHAIN SLING ASSEMBLY

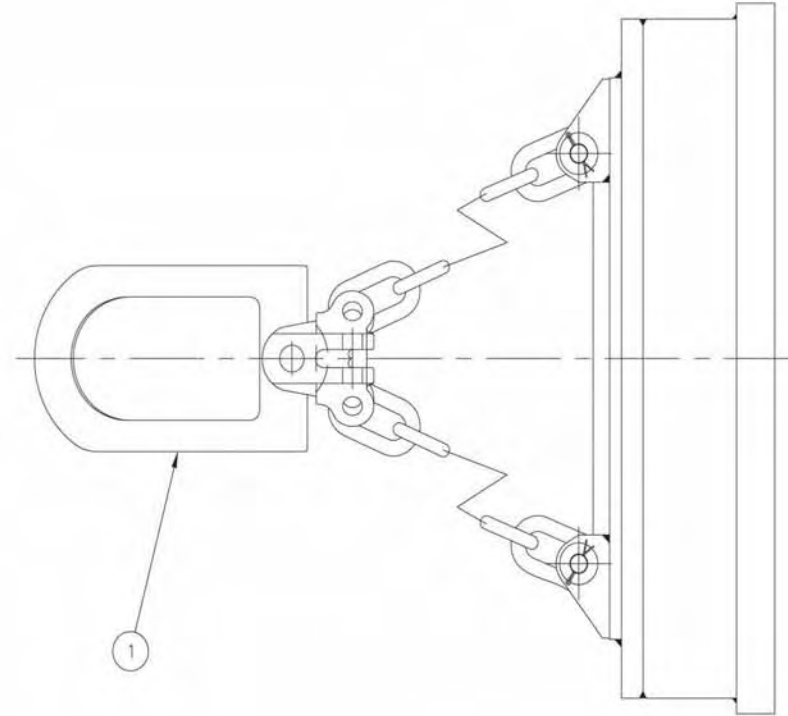
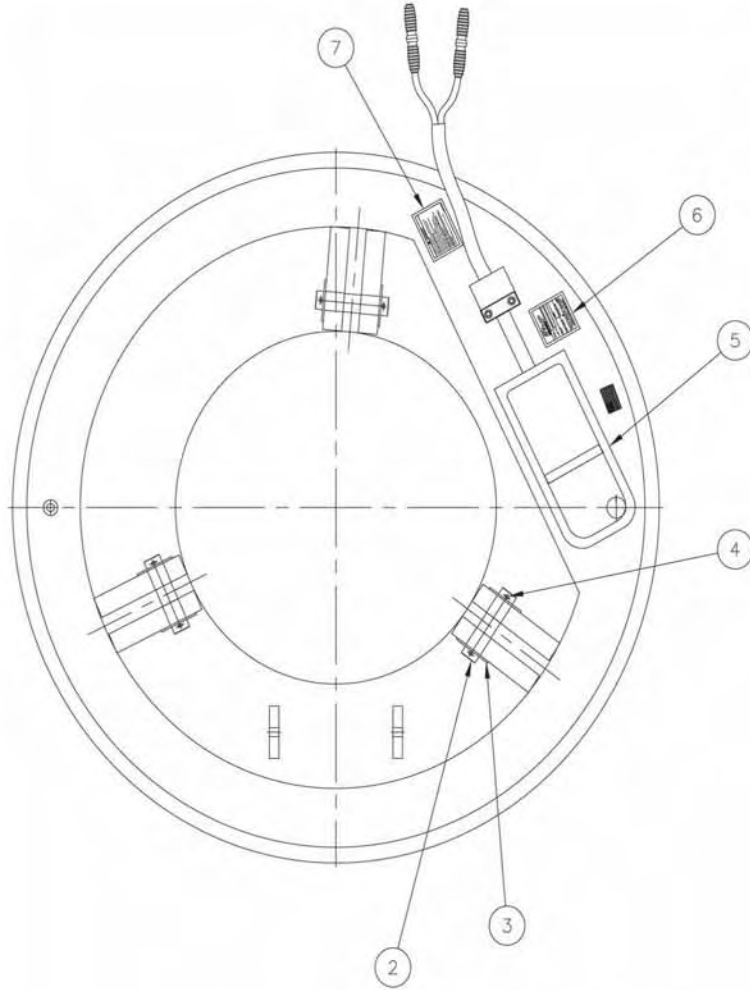


| ITEM | DESCRIPTION |
|------|--|
| 1. | ALLOY CASTING WITH NO MOVING PARTS |
| 2. | EQUALY SPACED LEGS |
| 3. | ENTIRE ASSEMBLY IS PROOF TESTED ALLOY STEEL |
| 4. | WLL:67.8M TON PER SET |
| 5. | TOTAL REACH(Y) =66" |
| 6. | $X=2\frac{3}{4}$ " , $X'=2\frac{3}{4}$ " , $W=9\frac{1}{2}$ " , $W'=7$ " , $L=14\frac{1}{2}$ " |
| 7. | END LINK , DIA= $1\frac{1}{2}$ " , $A=2\frac{1}{8}$ " , $B=7$ " |

| | | | | |
|----------------------|--|--------------------|-------------------------------|-------------------|
| MANUFACTURER 製造廠商 |  HWE WANG ENTERPRISES INC. 揮王企業股份有限公司 TEL:07-8317878 FAX:07-8311789 | PROJEC NAME 品名 | 100" MAGNET CHAIN SLING ASS'Y | DRAWING NO. 圖號 |
| | | NAME OF DWG. 圖名 | | 2011-0104-02 |

磁鐵吊鍊示意圖

MAGNET CHAIN SLING ON MAGNET



| | | |
|-----------------------------|-----------|---------|
| NO. | DATE BY | DATE BY |
| MAGNET+ALLOY CHAIN ASSEMBLY | | |
| SCALE: 1:8 | DATE: 7/7 | REV: ~ |
| DRAWN BY: UOULAW | | |
| CHECKED: | | |
| APPROVED: | | |

 HWE WANG ENTERPRISES INC.