



懸吊式永久磁鐵磁選機

# SUSPENDED PERMANENT MAGNET

CP20/80L型 MODEL CP 20/80L SC-2



*Automatically remove large amounts of ferrous contamination from non-ferrous materials conveyed on almost any type of conveyor or chute.*

#### 特性和優點

- ◎ 低操作成本
- ◎ 磁鐵上勿需電力維護
- ◎ 沒有很貴的當機費用
- ◎ 不會干擾磁鐵的保護
- ◎ 簡單安裝
- ◎ 強有力的磁場
- ◎ 勿需電力的之久磁鐵

#### FEATURES & BENEFITS

- Low operating cost
- No electrical maintenance on magnet
- No costly shutdowns
- Uninterrupted magnetic protection
- Simple installation
- Powerful magnetic field
- Permanent magnet requires no power

ONLY FROM ERIEZ

Eriez, world authority in magnetic equipment and the pioneer of Permanent Magnets, brings you this new line of Suspended Permanent Magnets with operating advantages never before available.

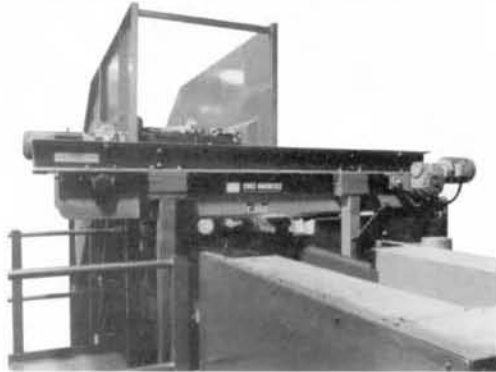
Suspended Magnetic Separators are designed for applications where ferrous contaminants are to be removed from bulk products, either on a moving conveyor belt or chute.

The CP 20/80L utilizes a permanent magnet circuit to provide a continuous and uniform magnetic field across the feed belt to optimize separation efficiency of damaging tramp iron. The self cleaning feature supplied with the unit provides for automatic removal of accumulated tramp metal.

## TYPICAL OPERATION 典型的操作

The magnet is placed across the conveyor belt. A moving continuous belt surrounds the magnet box. Ferrous material is attracted by the magnet and is held on the belt. As the belt moves clear of the magnetic field, ferrous metals fall away into bins for collection and disposal.

The CP 20/80L SC-2 is designed for a maximum suspension height of approximately 10 inches (250 mm) on belts less than 36 inches (1 m) wide. Applications involving wider belts or higher suspension may require a larger suspended permanent magnet or an SE7000 electromagnet.



## MAGNET SELECTION 磁鐵選用

The size of the appropriate suspended permanent magnetic separator depends upon each specific application. Eriez engineers need the listed information in order to select the most efficient and economic magnet for any particular application.

## INFORMATION REQUIRED 需求資料

- Material type
- Material bulk density
- Material condition
- Material size
- Type and minimum size of tramp iron
- Maximum lump size
- Conveyor belt/chute width
- Conveyor belt speed
- Conveyor belt/chute dimensions and incline
- Angle of "troughing" idlers
- Machinery to be protected
- Head pulley diameter
- Head pulley material

## SPECIFICATIONS 規格

