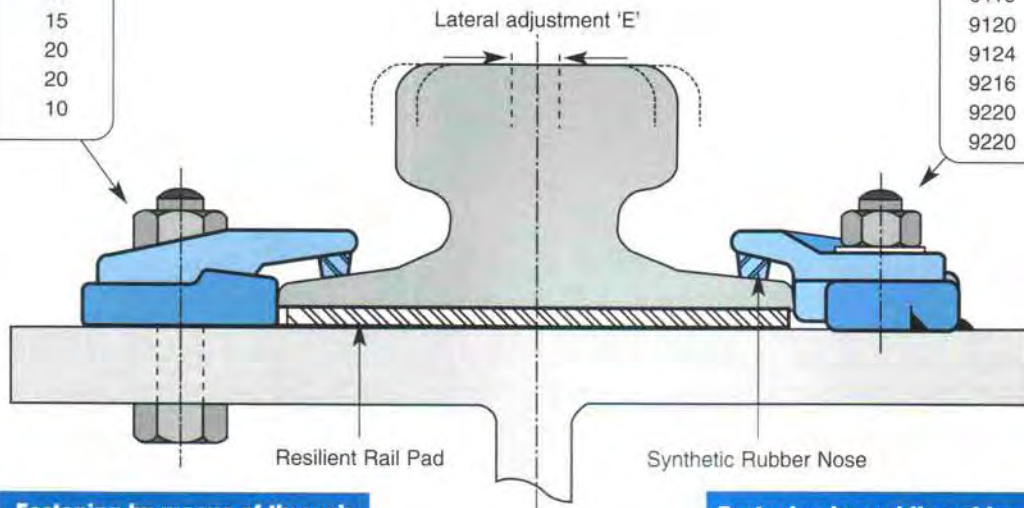


## CRANE RAIL FASTENING METHOD for use on steel base

GANTRAIL Clip type:	E(mm)
2112	5
3116	10
3120	15
3124	20
3224	20
7120	10

GANTRAIL Clip type:	E(mm)
9116	8
9116	10
9120	15
9124	20
9216	8
9220	18
9220	20



**Fastening by means of through bolts or welded studs.**

**Fastening by welding of lower part, and by removable bolts.**

**A comprehensive range of clips** to suit all crane rails and offering the following advantages:

- Lateral adjustment of the rail during and after installation, which eases mounting and track maintenance.
- Surge restraint and locking of the clip against lateral movement by system of double inclination.
- Reduced height allowing for lateral crane guide wheels.
- Pressure applied onto the rail by means of an intermediate block of flexible synthetic elastomer.
  - ◆ absorbing the tolerance of the rail and girder
  - ◆ eliminating the effects of fatigue on the fixing bolts
  - ◆ ensuring precompression of the pad under the rail
  - ◆ limiting the movement of rail sections

**A range of resilient rail pads** with the following advantages:

- Reduces stress in rail and structure
- Gives even spread of load
- Eliminates fretting between rail and structure
- Dampens vibration and noise
- Manufactured in various widths to suit all types of rail

Detailed specifications of **GANTRAIL** clips and pads are available on request.

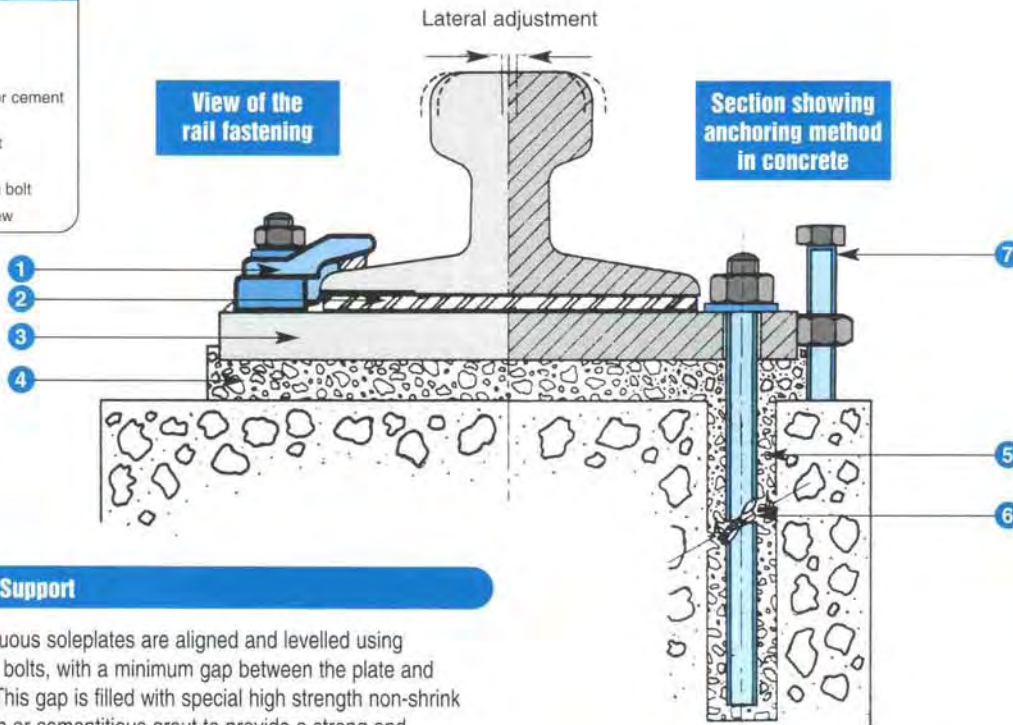
### 5 YEAR GUARANTEE

Gantrail Rail Clips are covered by our five year replacement guarantee providing always that they are correctly specified and installed in accordance with our recommendations based on precise information being given to us regarding the type of environment and nature of duty they are required to withstand. Additional products supplied by ourselves but manufactured by others will be subject to the individual suppliers terms of warranty.

# CRANE RAIL FASTENING METHOD for use on concrete beams

## GANTRAIL MOUNTING SYSTEMS COMPRISES:

- 1 Clip
- 2 Pad
- 3 Soleplate
- 4 Epoxy resin or cement based grout
- 5 Drilled or cast bolt-hole
- 6 Holding down bolt
- 7 Levelling screw



## Continuous Support

- The continuous soleplates are aligned and levelled using foundation bolts, with a minimum gap between the plate and concrete. This gap is filled with special high strength non-shrink epoxy resin or cementitious grout to provide a strong and continuous support to the soleplate. 15mm is required for epoxy grout and 25mm for cement based grout.
- The rail is fixed to the soleplate in the normal way using the **GANTRAIL** clips and pads.

## Discontinuous Support

- The rail is supported at regular intervals by individual soleplates that are fixed with two or four holding down bolts. They are typically grouted in place once the rail has been positioned and the **GANTRAIL** rail clips and pad have been fixed. This ensures they fully and effectively support the rail. The soleplates are spaced to ensure rail stresses and deflections are within acceptable limits.

## Design Characteristics

- Either method incorporating **GANTRAIL** clips and pads, as outlined above, ensures an even distribution and transmission of the vertical and horizontal load into the concrete foundation.
- It eliminates the disintegration of the concrete around the holding down bolts.
- It simplifies the mounting and adjustment of the rail.
- It permits easier replacement of rails in the future.

## Gantrail systems and equipment have been installed in most countries throughout the world including the following:

Abu Dhabi	Denmark	Indonesia	Mexico	South Africa
Australia	Dubai	India	Netherlands	Spain
Austria	Eire	Iran	New Zealand	Sri Lanka
Argentina	Ecuador	Iraq	Norway	Sweden
Bahrain	Finland	Italy	Oman	Switzerland
Brazil	France	Japan	Phillipines	Tunisia
Belgium	Germany	Korea	Poland	Venezuela
Canada	Greece	Kuwait	Portugal	USA
Chile	Hong Kong	Lebanon	Qatar	Zambia
Colombia	Hungary	Malaysia	Saudi Arabia	
Czech Republic	Iceland		Singapore	

## FOR USE IN:

- Docks & Harbours
- Shipyards
- Power Stations
- Automated Warehouses
- Aluminium Production
- Water Treatment Plants
- Container Depots
- Steelworks
- Cement Works
- Industrial Complexes
- Nuclear Processing
- Timber Yards